

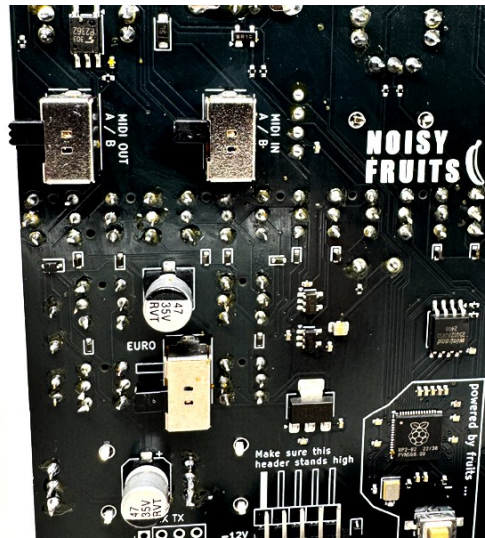


KIWI – MIDI & CV Controller Manual

KIWI is plug & play, means with connecting to a PC it's available straight away like most common MIDI controllers out there.

NEVER power the unit with Eurorack and USB power at the same time!
It's protected, but who knows

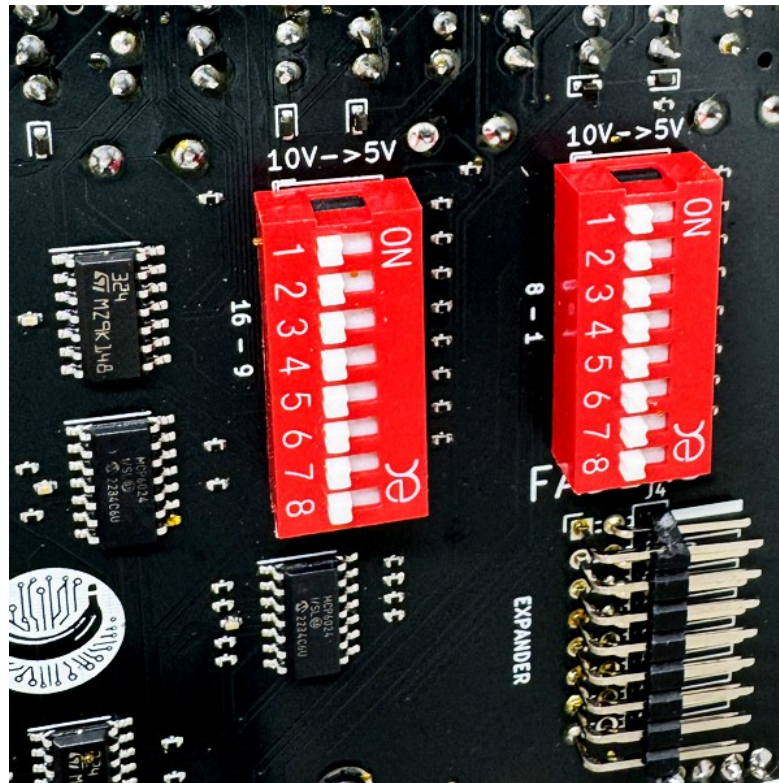
Before connecting the first time you need to decide which power source you're using!
Switch the Euro / USB switch to needed spot.



The 8 faders & pots on the left side are capable of sending CV out in a range from 0-5V or 0-10V.



For changing the CV voltage range use the DIP switches on the backside.

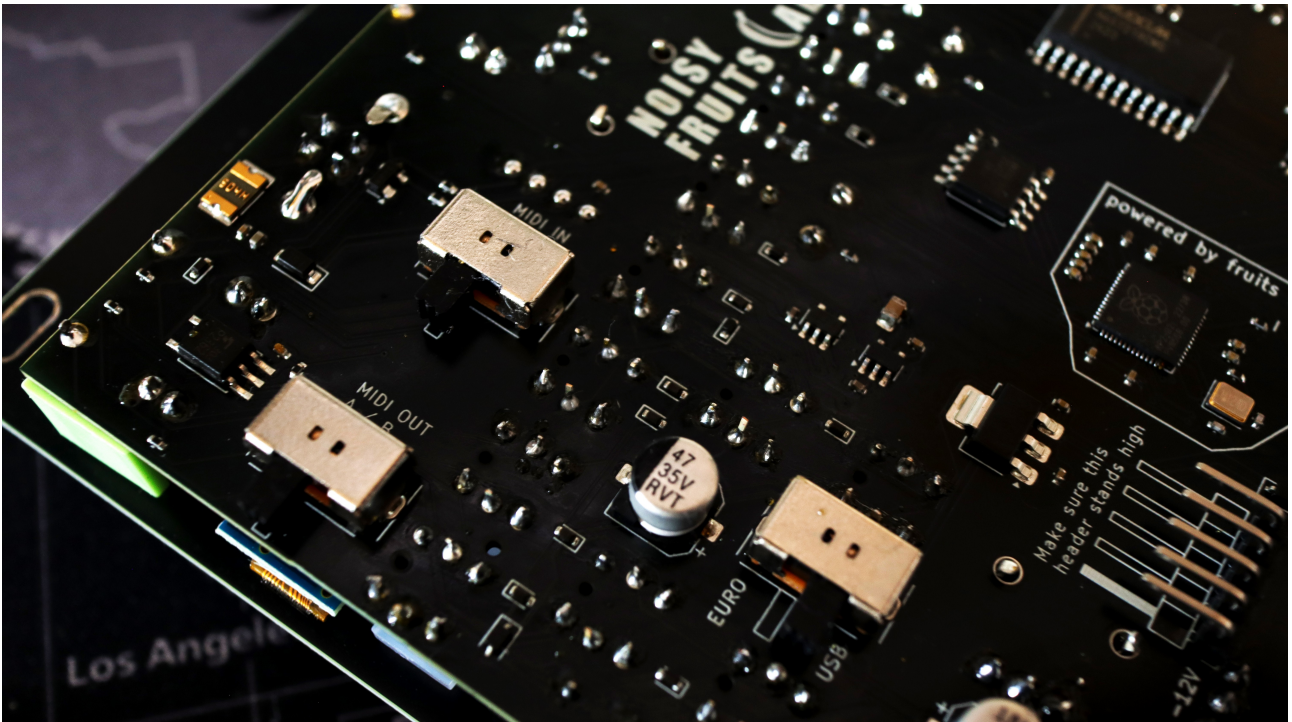


KIWI can send and receive DIN MIDI data over the TRS jacks on the right side and the USB connector. Each Fader and Potentiometer are sending typical CC values in a range from 0-127 steps.



As some designers couldn't agree to a TRS MIDI connection standard we need to deal with TRS MIDI wires as A & B versions.

With the A&B switches on the backside for MIDI in & out you can choose which standard you need.



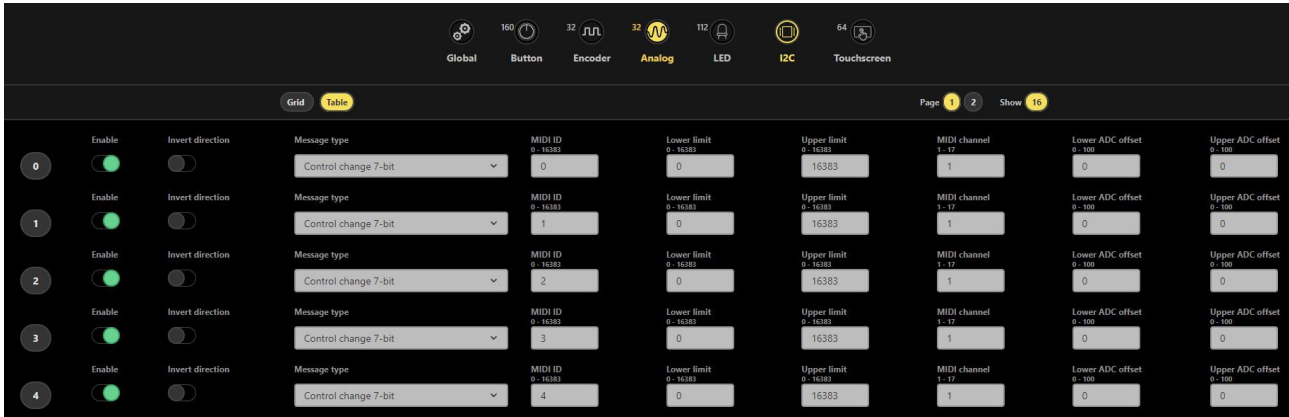
KIWI comes preloaded with an inhouse preset you can find as download in case you need to restore back to that preset. The four green buttons below the display are used for switching presets / layer.

Each layer does the same, but on different MIDI Channels. (1-4)

Function	CC	Channel / Layer
Faders 1 - 8	0 - 7	1,2,3,4
Potentiometers 1 - 12	8 - 19	1,2,3,4
	Note	
Buttons 1 - 16	0-15	1,2,3,4
Buttons 21 - 24	20 - 23	1,2,3,4

Use the web- or desktop editor to modify all values of the MIDI related parts, like MIDI channels, CC numbers, note numbers, LED addresses, Min & Max for faders & pots, DIN MIDI behaviour and so on ...

With doing a factory reset all functions are disabled. So you need to activate the faders and pots and readress the LEDs.



Online Editor:

<https://config.shanteacontrols.com/#/>

Desktop Editor:

<https://github.com/shanteacontrols/OpenDeckUI/releases>

The firmware got released by [ShanteaControls](#) and is licensed under Apache 2.0

Firmware updates:

In case shantea controls releases an update for the firmware it will be provided as xxxxx.uf2 file.

Keep the BTLDR button on the backside pressed while connecting to a PC. KIWI should pop up as an USB drive / storage. Simply drag or copy the provided firmware file onto that drive.

That's it.

Reboot or reconnect KIWI.

noisyfruitslab.com
Andrew McLoud 2024

